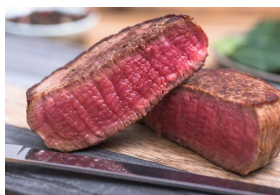


# Clear Springs Station

## All Natural Grassfed Black Angus Beef



Clear Springs grassfed cattle yield tender, moist and lean beef cuts which are packed with flavour and naturally low in fat and cholesterol.

Clear Springs' Black Angus herd roam freely and feed on lush and nutrient-rich pasture, whole-of-life.

Our all-natural philosophy is backed by independent, certification and rigorous audits. At Clear Springs, we stand by our claims:

- ✓ 100% Grassfed, whole-of-life
- ✓ No grain, no additives
- ✓ No feedlots
- ✓ No antibiotics
- ✓ No hormones
- ✓ No genetically modified organisms (GMO)
- ✓ No confinement, free-roaming whole-of-life
- ✓ Low animal-to-land ratio
- ✓ Low stress handling and ethical husbandry practices



LIVESTOCK PRODUCTION ASSURANCE  
STAND BY WHAT YOU SELL



## Cut Portfolio

The photos on this product sheet were taken from a Clear Springs Steer, **J91, aged 26 months, dentition: 2**, processed in October 2015.

### Hindquarter



Topside



Topside Cap Off



Outside



Outside Flat



Eye Round



Thick Flank



Knuckle

### Rump



Rump



D-Rump



Rump Cap



Rost Biff



Tri Tip

### Tenderloin



Tenderloin Side Strap On



Tenderloin Side Strap Off

### Striploin



Striploin



Larder Trim

### Cube Roll



Cube Roll

### Blade



Blade



Oyster Blade



Bolar Blade

### Forequarter



Chuck Roll



Chuck Tender

### Brisket



Brisket Point End



Brisket Navel End

### Others



Flank Steak



Shin Shank



Trimming 85CL